

Sharing the road with farm and construction vehicles

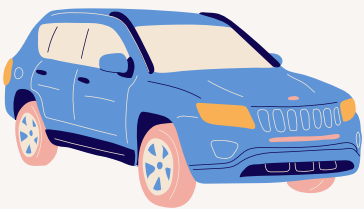
WHAT DRIVERS SHOULD KNOW

- This equipment is heavy, making it hard to accelerate, slow down, & stop.
- They often cross the centerline when making a turn.
- They have large blind spots.



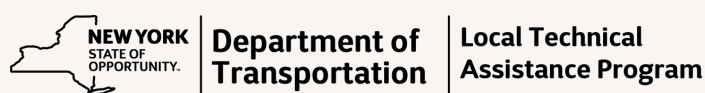
SAFETY FOR MOTORISTS

- Watch for debris and slow down if there is anything in the road.
- Don't assume the operator can see you
- Wait until it is safe to pass.
- Wear a seatbelt and drive with your headlights on.
- When approaching farm or construction equipment leave ample room between the vehicles.



EQUIPMENT OPERATORS

- Make your equipment more visible by using flashers or lights.
- Avoid signaling for motorists to pass, pull over when it is safe and let them pass.
- Plan your route, try to avoid narrow streets where you could potentially damage signs, lighting, and other roadway structures.
- If moving equipment at night, consider using an escort vehicle.



New York State LTAP Center
Cornell Local Roads Program
website



Information sourced by:
Schmierbach, E;
The Free Press Mankato,
Minn, Oct. 1, 2022