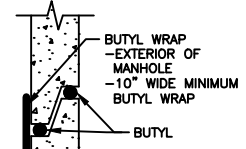
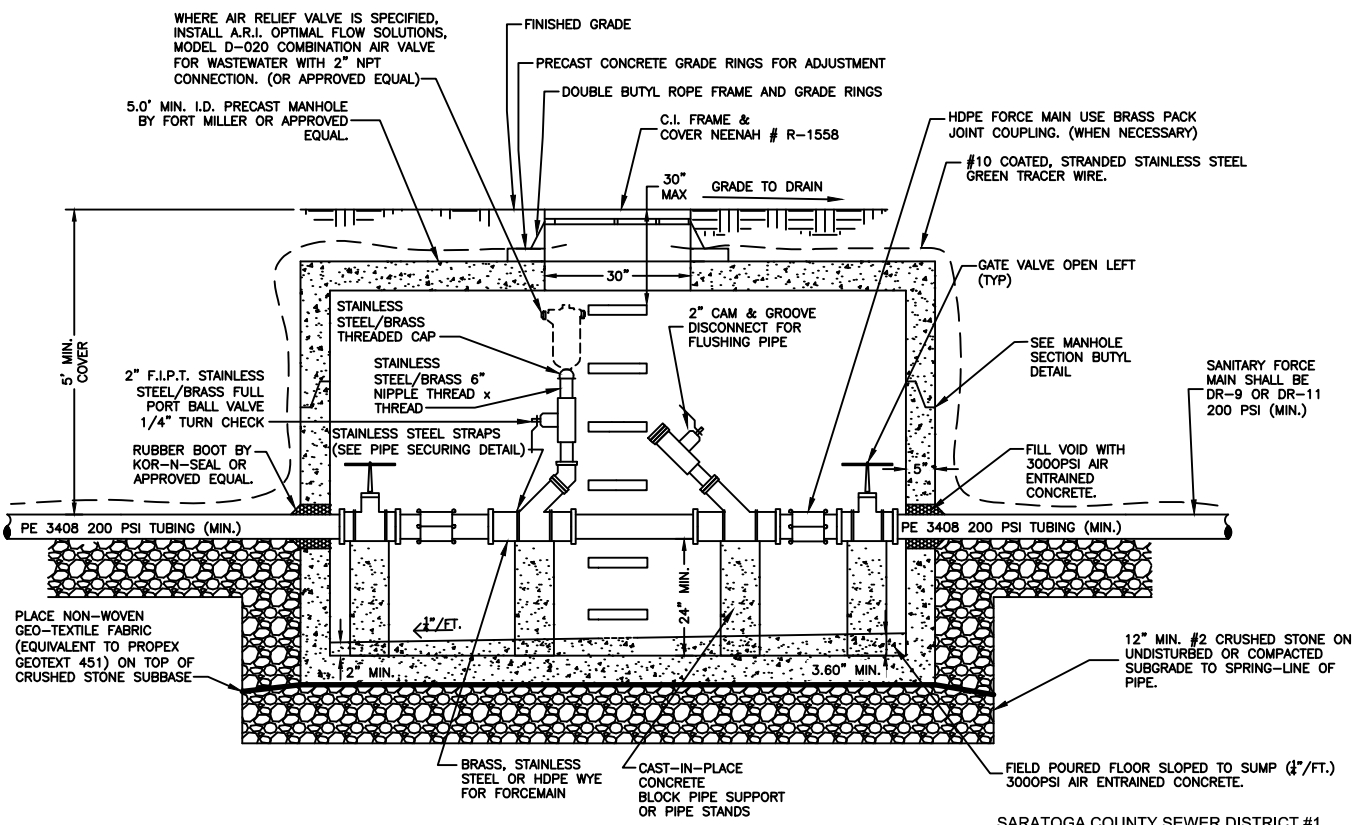


- NOTES:**
- CONTRACTOR TO CONFIRM ADEQUATE SPACE WITHIN MANHOLE STRUCTURE TO COMPLETE ALL FITTINGS AND APPURTENANCES AS SHOWN PRIOR TO ORDERING STRUCTURES.
 - HDPE/POLY PIPE REQUIRES THE USE OF STAINLESS STEEL INSERT PIPE STIFFENERS FOR ALL PACK JOINT/COMPRESSION CONNECTIONS.
 - MANHOLE SHALL BE VACUUM TESTED PRIOR TO BACKFILL FOR SCSD #1 STANDARDS AND SPECIFICATIONS
 - PRIVATE SEWER LATERALS SHALL NOT BE CONNECTED TO MAIN SEWER LINE INSIDE STRUCTURE
 - INNER DIAMETER OF TUBING SHALL BE A MINIMUM OF 1-1/4"
 - RESTRAINED TUBING CONNECTION SHALL BE GRIP-RING OR PACK JOINT TYPE OR APPROVED EQUAL
 - ALL OFF-SITE MANHOLES SHALL BE MARKED WITH RHINO MARKING PROTECTION SYSTEM PER SCSD #1
 - CONTRACTOR IS RESPONSIBLE FOR ESTABLISHING FLOW



MANHOLE SECTION BUTYL DETAIL



PRESSURE SANITARY SEWER IN-LINE CLEAN OUT AND AIR RELIEF STATION (OPTION 2)
NOT TO SCALE

SARATOGA COUNTY SEWER DISTRICT #1 RESERVES THE RIGHT, AT OUR DISCRETION, TO CHANGE, MODIFY, ADD OR REMOVE PORTIONS OF THESE DETAIL SPEC'S AT ANY TIME



SARATOGA COUNTY SEWER DISTRICT #1

1002 HUDSON RIVER ROAD, MECHANICVILLE, NEW YORK

P.O. Box 550 Mechanicville, New York 12118
<http://www.saratogacountyny.gov/departments/sewer-district-1/>

Telephone: (518) 664-7396
 Fax: (518) 664-6280

S:\AuroCAD\SCSD Details\UPDATED 2018\UPDATED 2018\Pressure Sanitary Sewer In-Line Cleanout and Air Relief - Option 2.dwg